

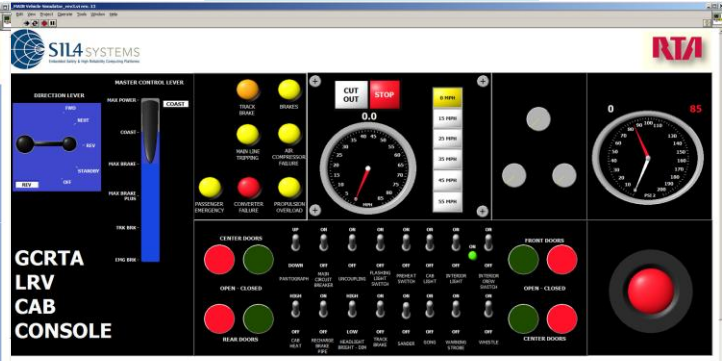
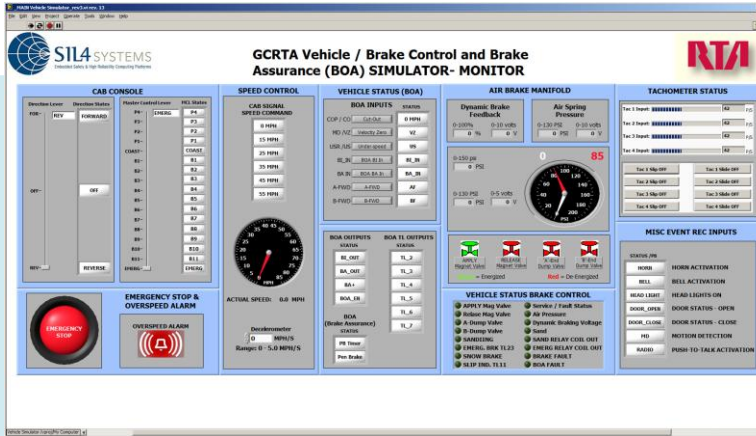
# SIL4 Systems Announces...

## Real-Time Light Rail Vehicle (LRV) Simulator



**SIL4 SYSTEMS**  
Embedded Safety & High Reliability Computing Platforms

Simulates Vehicle IO / Performance Characteristics



- GCRTA LRV Console (above)

Monitor and Record all Input/Output states



### HRV Simulations also:

- Miami-Dade HRV Console (above)
- GCRTA HRV Console (below)

### System Safety Validation

- Run 1000's of scenarios / day
- Discrete Fault Injection
- Random Fault Injection
- FTA/FMEA simulations

### System Trouble-shooting

- Run-Time Simulations
- Load Real-time files for "actual" condition replication

### Replacement PLATFORM for Obsolete Test-Set

- Replace / update your obsolete sub-system testers/diagnostics
- Automate the diagnostic/testing
- COTS Hi-REL Design throughout

### Environmental Test-bed

- Use for Environmental Test Bed while exercising Logic.



669 Washington Road, Pittsburgh, PA 15228

PH: 412.343.1180

Contact: info@sil4systems.com

www.sil4systems.com

Proprietary Information – SIL4 Systems Inc.

January 2013