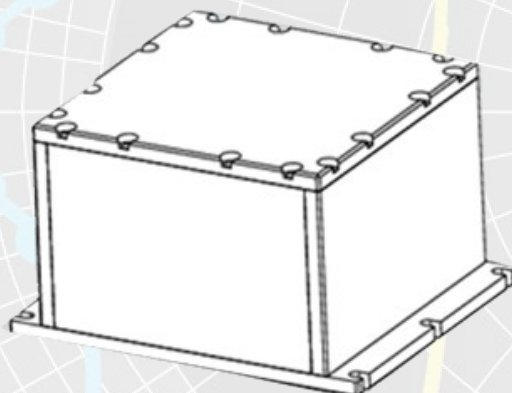
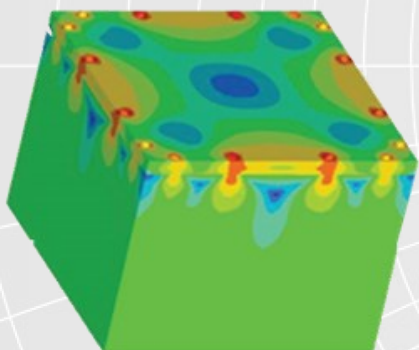


Rail-Transit Ready Platform: IEC, IEEE, CFR, and FRA Compliant



*Industry-Leading Performance: **Highest Reliability Available***

Model Name: SIL4-CHM

Feature Set: Standard Model

Standard Compliance: EN55022 & EN55024

Event Recording Capability:

SIL4-CHMM-EDR

Event Data Recorder

49 CFR Part 563

SIL4-CHM-ODDRS

On-Board Driving Data
Recording System

EN62625-1

Scalable Hi-Density Memory:

- Standard Size: 256GB
- Optional: 128GB, **512GB**, **1TB**
- Compact: 6" x 6" x 4.75"

Communications Interface:

- Standard: USB 2.0 / 3.0 or Ethernet
- File-System: FAT32, NTFS, or any required
- Operating Systems: Any OS compatible with USB 2.0/3.0

High Reliability is our mission, our passion, and SIL4's ongoing and relentless commitment.

High Reliability:

- Write-cycles: 2,000,000
- Data Retention: 10 years
- MTBF > 2,800,000 hours
- Error-correcting and wear-leveling
- Data Reliability: <1 non-recoverable error / 10^{14} bits read.

Contact us today for a quote!